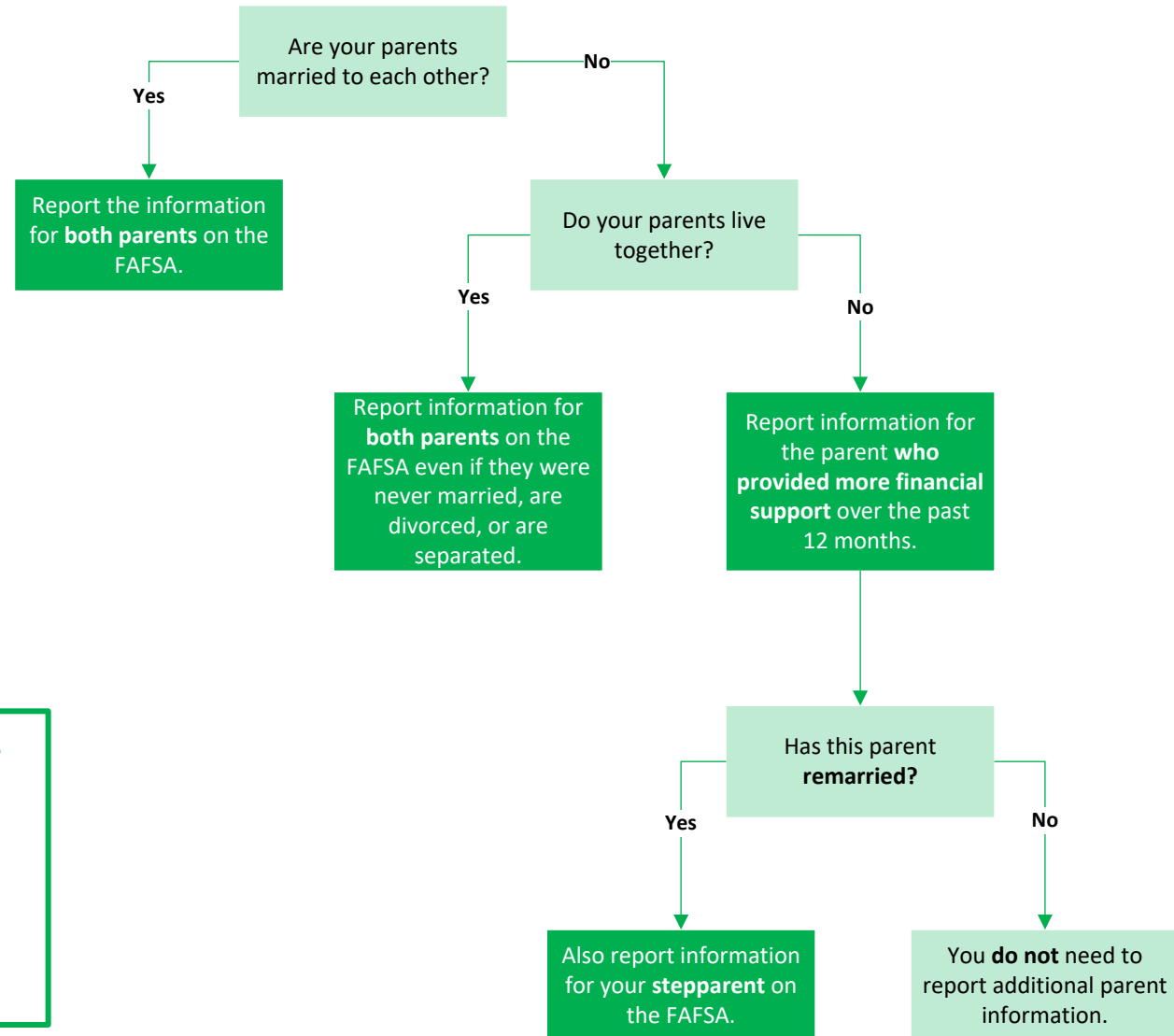


Who's MY PARENT when I fill out my FAFSA?

Dependent students are required to report parent information on the FAFSA as a "Contributor". A contributor is anyone who is asked to provide information on an applicant's FAFSA which includes your legal (biological or adoptive) parent or stepparent, or a person that the state has determined to be your legal parent (see bullet points below). Use the chart below to figure out which parent's information to include (depending on your family situation).



The following people are not your parents unless they have legally adopted you:

- Widowed step-parent
- Grandparents
- Foster parents
- Legal Guardians
- Older Brothers or Sisters
- Aunts or Uncles